



Leading suppliers of external shelters and solar shading

Why Waverley?



The smooth delivery of your outdoor project is our priority, we work in partnership with our customers to supply and fit the best solution for the space



Being an environmentally conscious, family-run business our strong ethics mean you can trust us to keep our promises and always do the right thing



With over four decade's experience, we are industry leaders who have the expertise to specify, supply and install an outdoor solution which provides you with a quality, stylish but practical finish



Servicing the commercial, education, public, hospitality and prime residential sectors and offering a wide range of bespoke solutions means it's likely we can help you, whatever the project

Brands we supply:



Who we work with:

- Contractors
- Specifiers
- Facilities Managers

Accreditations:



External Shelters





10 Year
Guarantee*

*on all aluminium canopies

Canopies



WeatherSpan Aluminium
Freestanding Apex Canopy



WeatherSpan Wave
Style Steel Canopy



WeatherSpan Curved Style
Steel Canopy

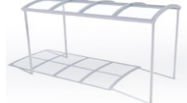
We manufacture and install a large selection of WeatherSpan aluminium canopies including lean-to and free-standing versions. Where a wave or curve effect is required, our range of WeatherSpan steel canopies fit the bill perfectly. Canopy accessories such as blinds, side panels, lighting and heating also available, both at time of purchase and for retrofit.



WeatherSpan Aluminium
Freestanding Mono-Pitch Canopy



WeatherSpan Aluminium
Lean-to Canopy



WeatherSpan Curved Roof Steel
Covered Walkway

Product benefits:

- Durable and long-lasting
- Fully compliant and safe (accredited in the UK)
- Short lead times as UK manufactured
- 100% non-corrosive which maintains appearance
- Light but strong – can be attached to any building
- Aluminium canopies have integrated gutters and downpipes - attractive yet functional
- Perfect for the education and healthcare sectors

Pergolas

Bring the comfort of indoors to your garden or patio with a bioclimatic pergola. Liberta pergolas seamlessly blend into any environment. Available as fixed or retractable, and with a louvered or fabric roof.



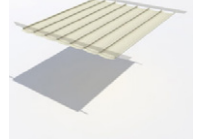
Liberta Vivo+ Retractable
Bioclimatic Pergola



Liberta Fabric Pergola



Liberta Vivo Bioclimatic Pergola



Liberta Retractable Fabric Roof

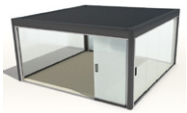
Product benefits:

- Sleek and refined
- Offer flexible shade and shelter
- Easily controlled and versatile
- Option of dimmable lighting on rigid louvered type for unbeatable ambience
- Popular in prime residential and hospitality applications



Garden Rooms

The Liberta Garden Room is a versatile structure with sliding glass doors and a solid, waterproof roof that houses solar panels for standalone power or even to direct power back to the property. Take the indoors outdoors!



Liberta Outdoor Room

Product benefits:

- Option for solar panels meaning no power costs
- Excellent acoustics due to tensile backlit fabric
- Long-lasting, non-corrosive aluminium structure
- Weatherproof and durable
- Flexible options with custom colours available



External Solar Shading



ShadeTech EVB External Venetian Blind



ShadeTech EZB External ZIP Roller Blind



Weinor Cassita II Awning



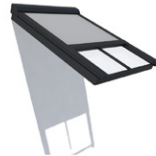
Weinor IKN 2000 Awning



ShadeTech EZB-BI External Built-in ZIP Roller Blind



ShadeTech EZRB External Roof ZIP Blind



ShadeTech EZRB-C External Compact Roof ZIP Blind



Weinor Topas Awning



Weinor Opal Design II Awning



Weinor PergoTex II Retractable Patio Roof



Weinor Plaza Viva

External Blinds

The ShadeTech external blind range ensures maximum energy efficiency by preventing solar heat gain before it enters the building with motorised external blinds. Available in a venetian, roller or roof blind style.

Product benefits:

- Prevents solar heat gain, therefore reducing reliance on HVAC and helping to minimise energy bills
- Provides a comfortable internal environment
- Integrates with automated systems for maximum efficiency
- Easily controlled

Awnings

Contemporary, non-obtrusive and retractable, Weinor awnings offer the perfect external shading solution for environments where flexibility and aesthetics are priority.



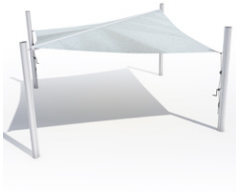
Weinor Kubata Awning

Product benefits:

- Extensive range to suit any application
- Many specification options to accommodate all requirements
- Easy to operate
- Weather resistant and robust



Liberta Fixed Shade Sail



Liberta Retractable Shade Sail



Sail Shades

Provide shade and shelter all year round with our range of Liberta sail shades. Available in both fixed and retractable configurations.

Product benefits:

- Bespoke options to suit your space
- Allows you to maximise the outdoor area
- Simple and quick to install
- Ideal for the education and hospitality sectors



ShadeTech ETSS
Terrace Shading System

Wintergarden Systems

The ShadeTech Wintergarden system is perfect for large-scale shading solutions, providing up to 100m² of shade with a single mechanism.

Product benefits:

- Versatile design which adapts to the environment
- Vast area covered with just one mechanism, making it inherently reliable
- Aesthetically pleasing – only 6mm diameter cables visible when retracted
- Easy to install – no side fixings required
- Quiet and smooth to deploy
- Suitable for both internal and external use
- Wide choice of colours and fabrics to suit many applications



Liberta Aluminium
Side Pole Parasol



Liberta Aluminium
Telescopic Parasol



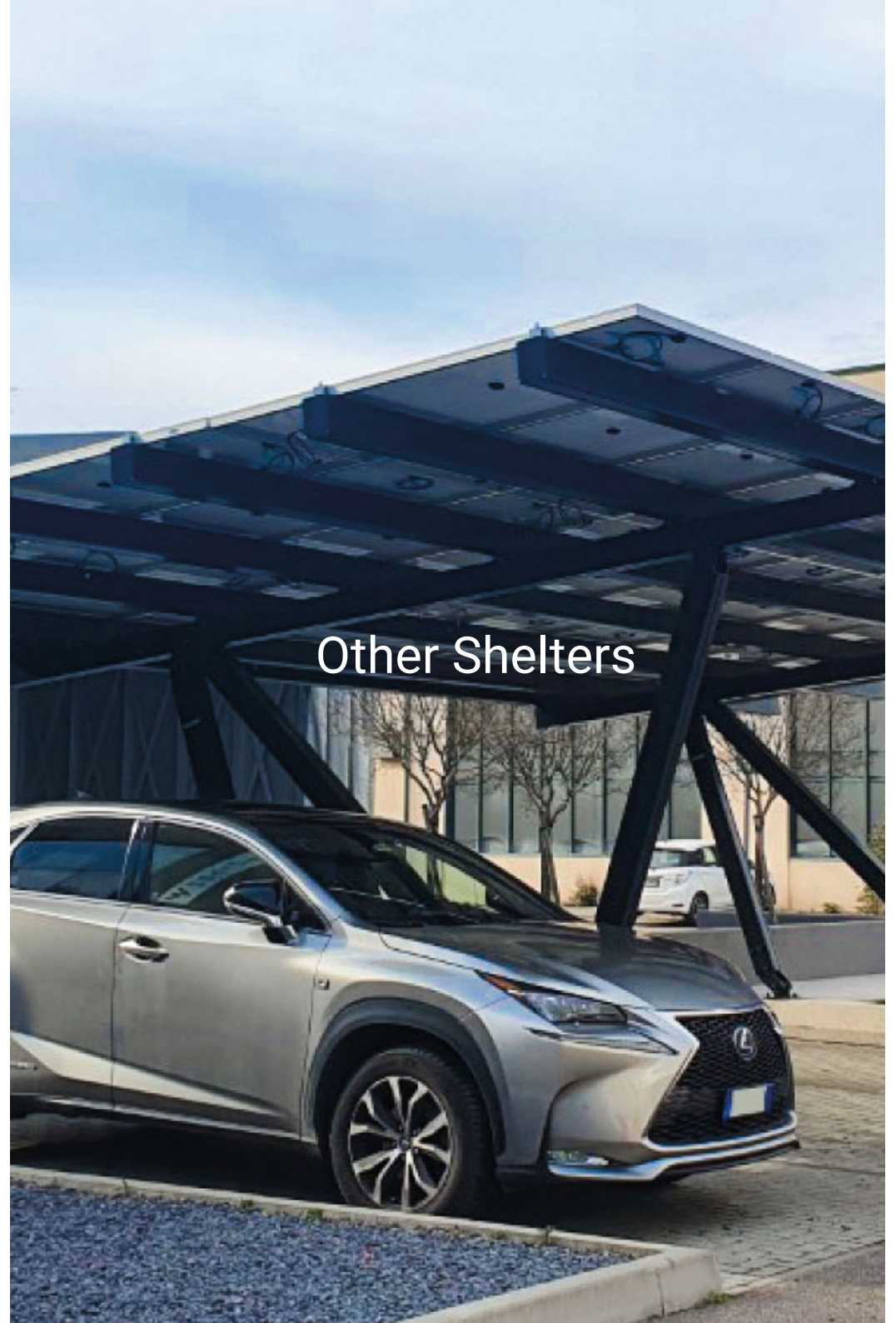
Liberta Stainless Steel
Heavy Duty Parasol

Parasols

A simple and cost-effective solution providing shade and shelter for outdoor hospitality spaces. Liberta parasols are available with a side pole, a telescopic pole or in stainless steel for heavy duty applications.

Product benefits:

- Wind and water resistant
- Contemporary, strong and versatile
- Vast range of accompanying accessories
- Gives back control in adverse weather conditions



Other Shelters



Giulio Barbieri Pensilsole Solar Carport

10 Year
Guarantee*

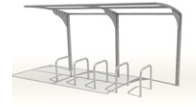
*on all solar carports

Solar Carports

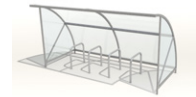
Giulio Barbieri solar carports support electric car charging infrastructure and generate solar energy for your chargers, while providing protection for your vehicle.

Product benefits:

- Reduces energy bills
- Source of sustainable energy
- Protects vehicles from the elements
- Non-corrosive frame ensures durability
- 10-year warranty to give to peace of mind
- Compatible with any solar panel model



WeatherSpan Cantilever
Cycle Shelter



WeatherSpan Open
Fronted Cycle Shelter



WeatherSpan Closed
Compound Cycle Shelter



WeatherSpan Double
Cantilever Cycle Shelter



WeatherSpan Extended
Front Cycle Shelter



WeatherSpan Open
Compound Cycle Shelter

Cycle Shelters

The WeatherSpan range of cycle shelters is simple, secure and sturdy. Available with a single or double cantilever, as a closed or open compound and with an extended or open front.

Product benefits:

- Different fixing options to suit your requirements
- Cycle stands supplied as standard
- Choice of finish
- Numerous colour options so you can select the perfect one for you

Our Work



**Riverwalk School,
Bury St Edmunds**
Canopies

The specification of WeatherSpan canopies not only provides attractive outdoor covered learning areas but also makes an eye-catching design statement and protects students from rain, wind and harmful UV rays at this school for students with severe and complex learning needs. Post protectors were also installed to ensure student and staff safety.



The German School, Richmond
Awnings

An electronically powered Weinor Topaz Folding Arm Awning was installed at this independent school in the grounds of Douglas House. Remotely controlled, the awning also has a motion detector sensor to retract it during high winds making it adaptable and effective at the same time.



Residential Property, Farnham
Pergola

A Liberta Vivo Bioclimatic Pergola was installed at this prime residential property in Surrey. With its attractive design it seamlessly blends into the environment while providing complete control over ventilation, light and shade at the touch of a button. Now the property owners can enjoy their garden – whatever the weather!



Chiswick Park, West London
Awnings

We undertook replacement of all external awnings at this renowned business park, resulting in a stunning solar shading solution that is highly effective at reducing heat and glare in the offices. The awnings will provide occupants with a comfortable internal temperature and environment, therefore increasing well-being and productivity.



**Brighton Hill Community School,
Basingstoke**
Cycle Shelter

An eye-catching 20m by 5m enclosed bike shelter was installed to encourage staff and pupils to cycle to this a coeducational secondary school located in Brighton Hill.



**Crendle Court,
Sherbourne**
External Blinds

Three ShadeTech motorised external roller blinds were fitted at this sprawling residential property in Dorset. The blinds will regulate sunlight, glare and temperature within the indoor swimming pool.

Want to know more about our products or services?
Thinking about starting a project with us?
We'd love to discuss your requirements.



Contact

hello@waverley.co.uk
01252 737973
waverley.co.uk

Waverley Head Office,
Rowan House,
Guildford Road Trading Estate,
Farnham, GU9 9PZ



